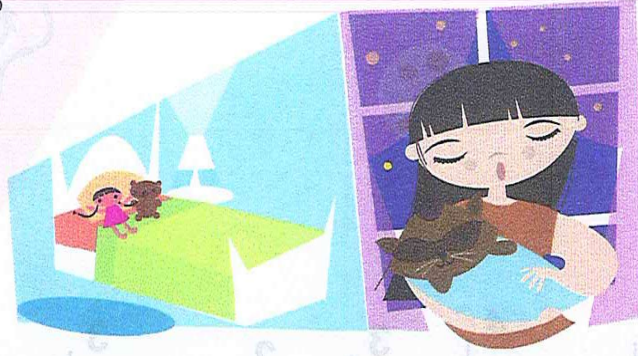
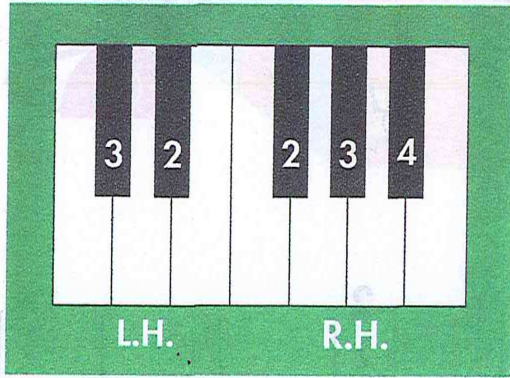


Raccoon's Lullaby

Half-Note Song with Alternating Hands



A lullaby is a song that helps someone go to sleep. Katie is singing to her favorite stuffed animal.

R.H. 2 *p* Go to sleep now, my rac - coon, my rac - coon.

L.H. 2

Teacher Duet: (Student plays HIGHER on the keyboard.)



Tips from Katie: (pp. 50–51)

1. Point to each note, counting, "1-2, 1-2," etc.
Use **L.H.** for *down*-stems and **R.H.** for *up*-stems.
2. Guide your teacher! Point to each note and say the **finger number** as your teacher plays.
3. Play on the piano, singing the finger numbers.
Have fun singing with the CD!



R.H. 2
 Go to sleep now, in the light of the moon.

L.H. 2

2 3 4 3 2

Musical score for piano accompaniment. The score is written on a grand staff (treble and bass clefs). The bass clef part starts with a *pp* (pianissimo) dynamic marking. The melody is simple and repetitive, with fingerings indicated above the notes. The piece ends with a double bar line and repeat dots.